

I'LL TREE GNOME FOR CHRISTMAS



ACTIVITY 10



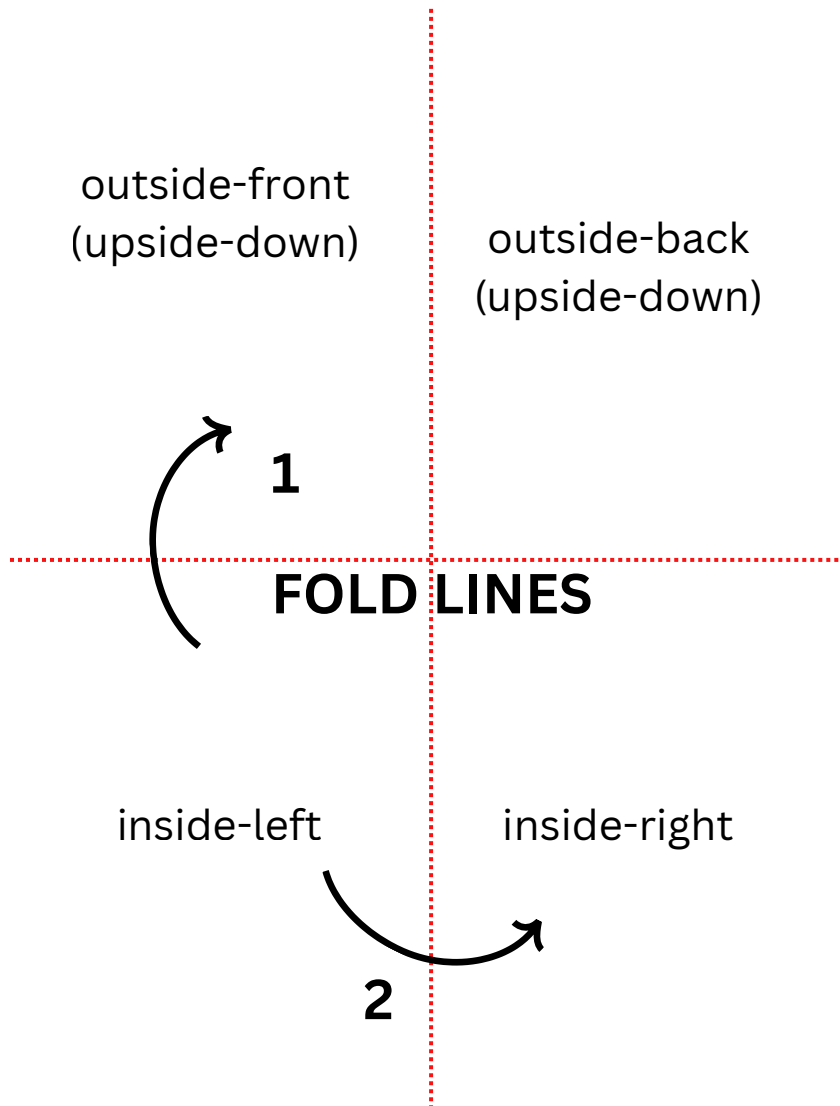
partywowzy.com



Directions

1. Cut the Door out on page 6 and tape it to a wall
2. Leave gnome letter in front of door with the card - two versions have been provided depending on how creative you want to be
3. Fold instructions are on the next page

CARD FOLDING INSTRUCTIONS



partywowzy.com







**Cut out and attach to a wall
or paste to cardboard and
lean against wall**



artywowzy.com



Blank Card

Use if you would like to write your own challenge



artywowzy.com

Another Gnome Card Design



**Now 25%
Off**



artywowzy.com